



The FALCON Floor Box is designed for use in rooms, where other access is not practical. directly to workstations, conference and training The FALCON Floor Box provides services data requirements in open spaces. provides an excellent solution for power and smallest Floor Boxes on the market yet it still The FALCON Floor Box is one of the Fast and Easy Installation.

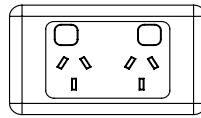
BETTER CABLE MANAGEMENT

The FALCON Floor Box design allows room for cables to be stored within the box when not in use and the recessed lid permits carpet or tiles to be installed to discretely merge it with its surroundings.

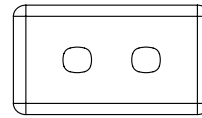


Falcon Series

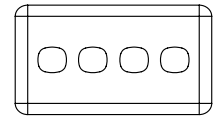
Common Components



Industry Standard Power Plate



Industry Standard 2 Data Plate



Industry Standard 4 Data Plate

Removable FALCON Lid can accommodate standard Elsafe M.P.O. Messenger Pedestal Outlet (optional)

Elsafe M.P.O. Carpet spacer (optional)

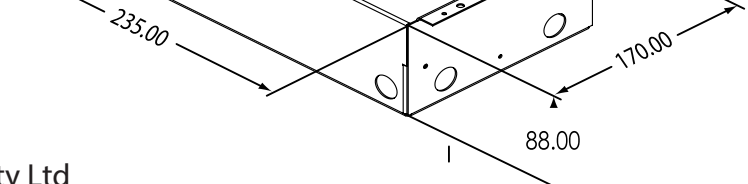
Removable & Reversible FALCON Lid

After the chassis is screwed to floor, the FALCON frame is fixed to the chassis

Hole for M.P.O. (optional)

The Screed Lid
Industry Standard Snip out

FALCON Chassis



USPs:

88mm deep Screed with 236mm x 171mm Cutout

Good for General Purpose

- Can Wire in Single Circuit
- Removable and Reversible
- Recessed Lid
- Designed for use with Industry Standard Power & Data Plates

Features

The smaller size of the FALCON Floor Box is ideal for situations where depth and size restrictions prohibit a larger Floor Box.

The reversible lid eliminates cable strain.

Simple removal of the lid provides easy access for carpet fitting.

The FALCON Floor Box is supplied as a kitted unit and the 2 inside walls of the FALCON Floor Box are designed to accept industry standard wall mounted plate.

The FALCON Floor Box has been designed to be reusable and relocatable.

Optional extra: for high volumes of cable that require distribution in a controlled method a MESSENGER MPO Surface Mount Grommet can be installed onto the FALCON Floor Box Lid.

Cableaway Pty Ltd
Unit 8 / 15 McPherson Road Smeaton Grange NSW 2567

www.cableaway.com.au PH: 1300 883 452

Email: sales@cableaway.com.au